

SWIMMING POOLS

A GUIDE FOR ARCHITECTS, DESIGNERS & HOMEOWNERS

PLUS!

Movable
Swimming Pool
Floors
p15

CREATING LUXURY SPACES

A selection with emphasis on 'form follows function' in today's world of minimalist design & contemporary architecture... by HEMANT ATRISH

CONTENTS

DESIGN | SUPPLY | INSTALLATION | MAINTENANCE



- 03 COVER PAGE FEATURE**
Overflow concrete pool with sauna in a basement
- 05 POOL IN A MODERN HOUSE**
Marbelite pool with a wooden deck surround
- 07 SWIMMING IN A COUNTRY FARM**
Natural stone finish vanishing edge pool
- 09 DESIGNER BEAUTY IN THE HEATH**
Italian stone finish in a sloping wall pool
- 11 EMPOWERING THE GARDEN SHED**
Economy pool in a standalone garden building
- 13 GRAND OPULENCE IN ST JOHNS WOOD**
Pool with a floating black stone surround
- 15 DISAPPEARING TRICK IN BELSIZE PARK**
Indoor pool with a moving floor
- 17 BARN CONVERSION IN SUSSEX**
That combines the old with the new
- 19 THE GLASS BOX IN HAMPSTEAD**
Modern lap pool in a glass outbuilding
- 21 KEEPING IT SIMPLE**
When usability is paramount
- 23 HYDROTHERAPY FOR THE DISABLED**
A high tech basement hydro pool
- 25 THE OLD FASHIONED WAY**
A traditional English garden pool
- 26 INFINITY POOL WITH A VIEW**
Location, location, location
- 27 THE PERFECT VANISHING EDGE**
A large pool in rolling hills
- 28 THE MIDDLE EASTERN LOOK**
Marble finish spa and hammam
- 29 A LUXURY HOTEL SPA**
Spa pool that makes people spend money



Monochrome setting accentuates
the natural color of water



COVER PAGE FEATURED POOL

Exposed concrete and Italian Stucco, bare design at its best.

The owner of this luxury house in West London had a minimalist theme in mind that the architects were able to capture by the use of monochrome colours and non-cladded walls, with the exception of sauna that is a bespoke creation entirely by us.

The challenge was to give this basement with no windows a light and open feel, so we chose the deck level overflow system that removes the level difference between pool water and surround to make the room look bigger.





It's always about the colour of water,
especially with simple pool shapes



SMALL POOL IN A MODERN HOUSE

Probably the plainest looking pool we have ever built.

We were asked to install a simple and functional pool in a simple and functional house, and as long as we could stick to the modest budget we were free to do anything. The result is a conventional skimmer type pool with a plastered finish and wooden deck surround.

We had to hide the pool plant somewhere out of view, which necessitated installing a compact cartridge filter with a low noise pump at the end of the patio, while a high efficiency heat pump keeps it warm April through October.





Reclaimed stone paving helps blend
the pool into the countryside



LARGE POOL IN A COUNTRY FARM

A brand new swimming pool that does not look new at all.

The owners of this country farm in Berkshire are avid swimmers and wanted a lap pool on their sloping land. The only flat bit of the property was dedicated to a cricket practice pitch for their sons, so the key was to put a pool on one of the slopes with minimum displacement of soil.

Undertaking the project as a complete design and build contract, we opted for a concrete pool with green slate finish and grey reclaimed Indian stone surround to complement the style of the property.





Massage island at the end of pool has a water channel running all around

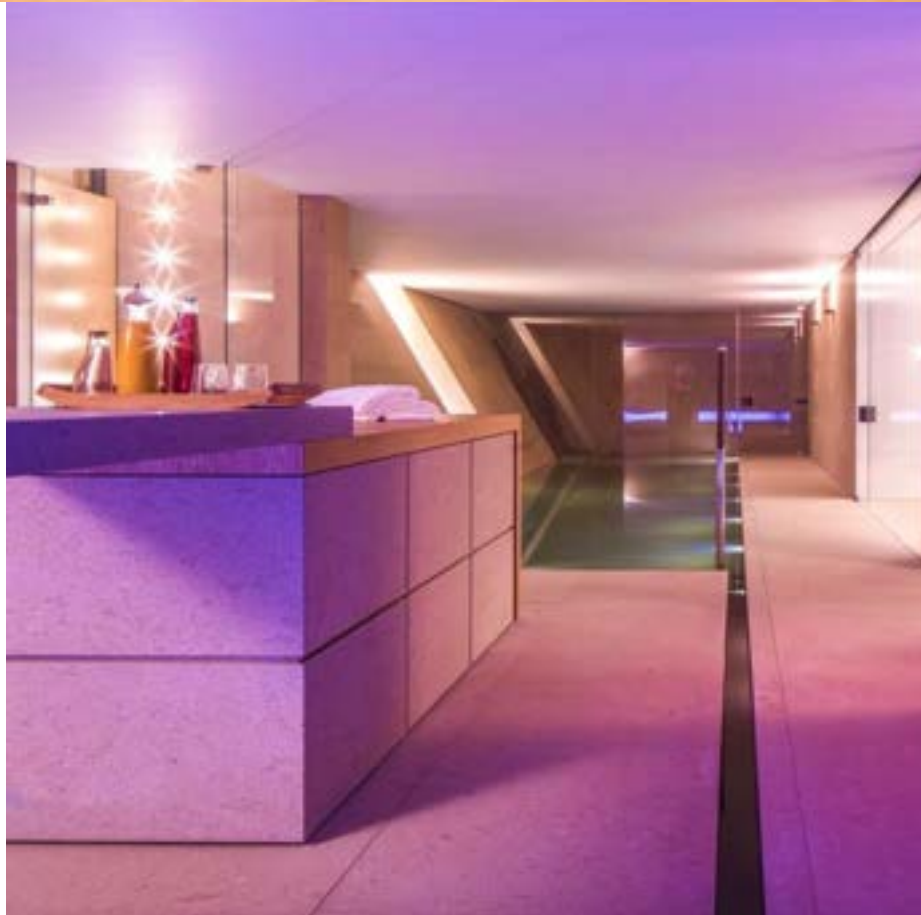


FEATURE POOL IN A DESIGNER HOUSE

A geometric marvel that adds just the right amount of 'Drama'.

Designed by the Italian architect 'Claudio Silvestrin' to be a designer home, this house has two storeys above the ground and three below. The entire house (walls and floor) is finished in Italian stone and the swimming pool is no exception.

A perfect example of the new contemporary design, the pool has a massage island, central feature skylight and a sloping wall to add drama to the scheme. A subtle waterfall, matching steam room and minimalistic sauna complete the look.





Adhering to a simple light grey palette makes this small pool look a reasonable size



SMALL POOL IN A GARDEN BUILDING

Fabulous looks that don't break the bank.

The designer did not get a brief for this pool, as it is in his own house in North West London, and the only client instruction was from his four year old daughter who wanted a waterfall. Also, as in quite a few cases in London, the small space dictated the design and layout of the pool.

To achieve a modern look, the bare-bones flat roof building was clad in wide black feather edge with bi-fold doors running two thirds of the length of the pool. Colour change lights in the ceiling help in keeping the interest alive for kids.





Bespoke mirrors and a stainless steel central water fall panel complement the black polished stone



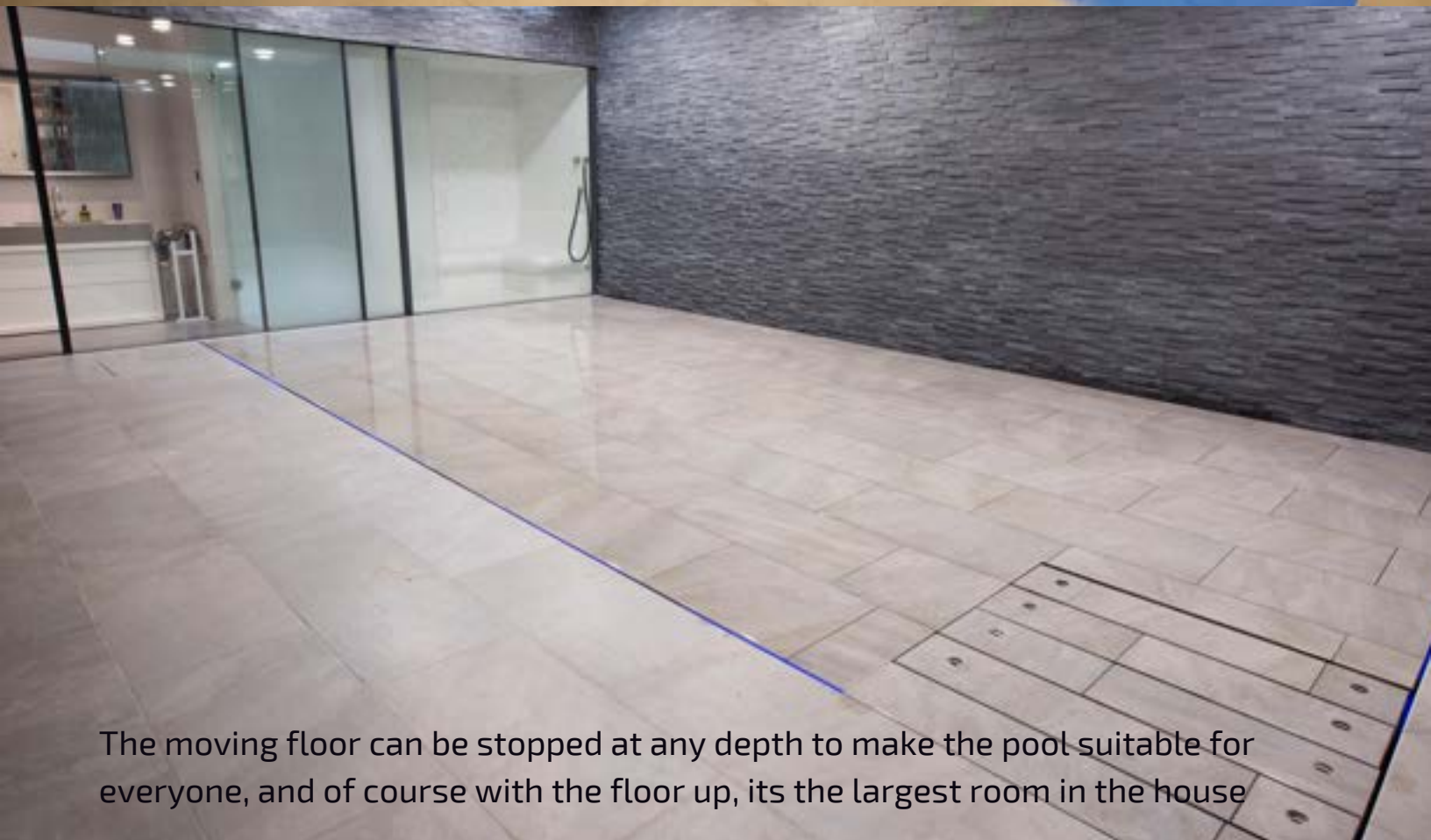
OPULANT BASEMENT POOL

Finishes that leave most other pools behind.

In this new built property, the emphasis was on bespoke finishes and extraordinary looks. The architects chose exquisite black stone finish to the surround with Iridescent Fired Earth mosaics for the inside of the pool.

The result as you can see is spectacular, especially when looked at the installation in its entirety, complete with the matching change rooms and a six seater steam room that is also clad in similar materials.





The moving floor can be stopped at any depth to make the pool suitable for everyone, and of course with the floor up, its the largest room in the house



DISAPPEARING SWIMMING POOL

Pool to dance floor in less than 3 minutes.

The owners of this house added a basement to their existing home with a swimming pool housed in the part of basement below the garden. Both love to entertain and with some guidance realised that the pool room is the biggest room in the house.

A moving floor is the perfect item for this 8m X 4m pool, as when the floor is up then, combined with a similar surround area, there is a 64sqm clear space for entertaining. A steam room is installed next to the pool along with a large shower and change room to complete the facility..





Well designed lighting can change the look of any space dramatically, as in this pool (see next page for comparison)



POOL IN A BARN CONVERSION

Rugged materials, clean lines.

This building is an extension of the existing barn in a listed house down in South East England, the property already had a traditional outdoor pool but the owners wanted something for use in any season.

As the building was long and narrow, we installed a deck level overflow lap pool with a contrasting spa. The materials selection was based on the premise of keeping a clean modern look whilst retaining the rural character of the property.





Large glass sliding doors like these help bring the outdoors in when the weather is right.



POOL IN A GLASS OUTBUILDING

For the five days of summer.

The brief for this project was to have a pool that is enclosed for year round use, but visually as open as possible with the ability to have a feel of an outdoor pool in summer. Also a must have was an open to air spa that complements the pool.

The architects designed the pool with sliding doors on three sides and with timber deck around the pool to merge it with the garden when the doors are open. It is clad in bespoke mosaics and there is a matching spa in one of the light wells.





Water features can add fun to any practical pool, on and off at the flick of a switch



MAKE NO MISTAKE INDOOR POOL

An honest and straight forward approach.

This pool was meant to be heavily used by three generations of a family, so ease of maintenance, safety and practicality were top priorities of the brief, plus some fun elements for the younger ones.

The pool was to be located in a building at the end of the garden, but due to objections by neighbours, the building had to be half in and half out of the ground. Two sheer descent waterfalls provide the fun much appreciated by the juniors and seniors alike.





A half in half out arrangement of a hydrotherapy pool helps the carers to do their job easily while standing outside the pool

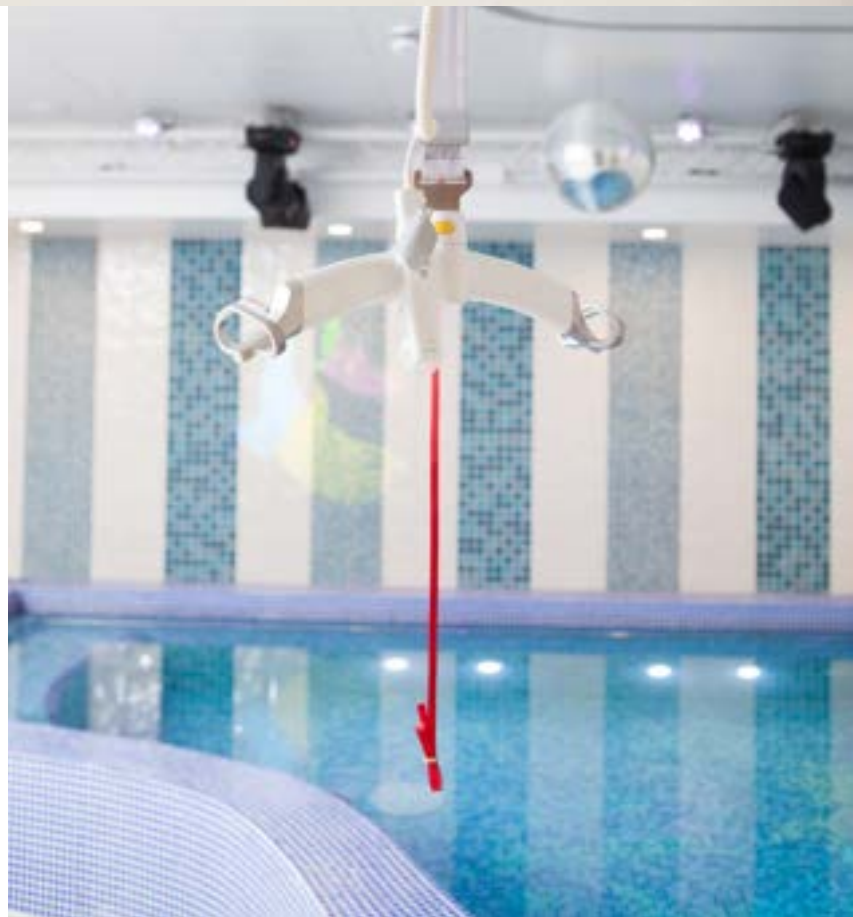


HYDROTHERAPY POOL

When a pool is not just a pool.

Designed for a home of disabled kids, this hydrotherapy pool is probably the most technologically advanced that we have ever built, and we are proud of it. It has sophisticated water jets, light and sound effects, plus a track mounted disabled lift that brings the users straight out from the change rooms.

Due to the high temperatures that this pool is run at for extended hours, the filtration, heating and ventilation systems installed are not only of very high capacity, but also high efficiency to keep the running costs down.





THE ENGLISH GARDEN POOL

Timeless elegance for a traditional garden.

A classic example of a simple free-board pool with a safety cover in the lovely back garden of a London suburban home near Southgate, this pool sets perfectly in its surroundings and shows how elegant an outdoor pool can be.

The owner of this property handed over the site to us and we handled the project from start to finish. The blue mosaics look stunning with the sandstone surround and the rounded corner steps add a traditional touch.





POOL WITH A VIEW

This is the east coast of England, really.

When we were approached for the design of this infinity pool back in 2006, we jumped with joy and anticipation. After all, it's not every day that one gets to design and install a pool with a perfect setting for infinity views.

The site on the grounds of a listed house in Felixstowe, Suffolk lies at the end of a cliff so more concrete went into structural underpinning and stabilisation of surround than in the pool itself. The owners have loved it since 2007 when it was finished.





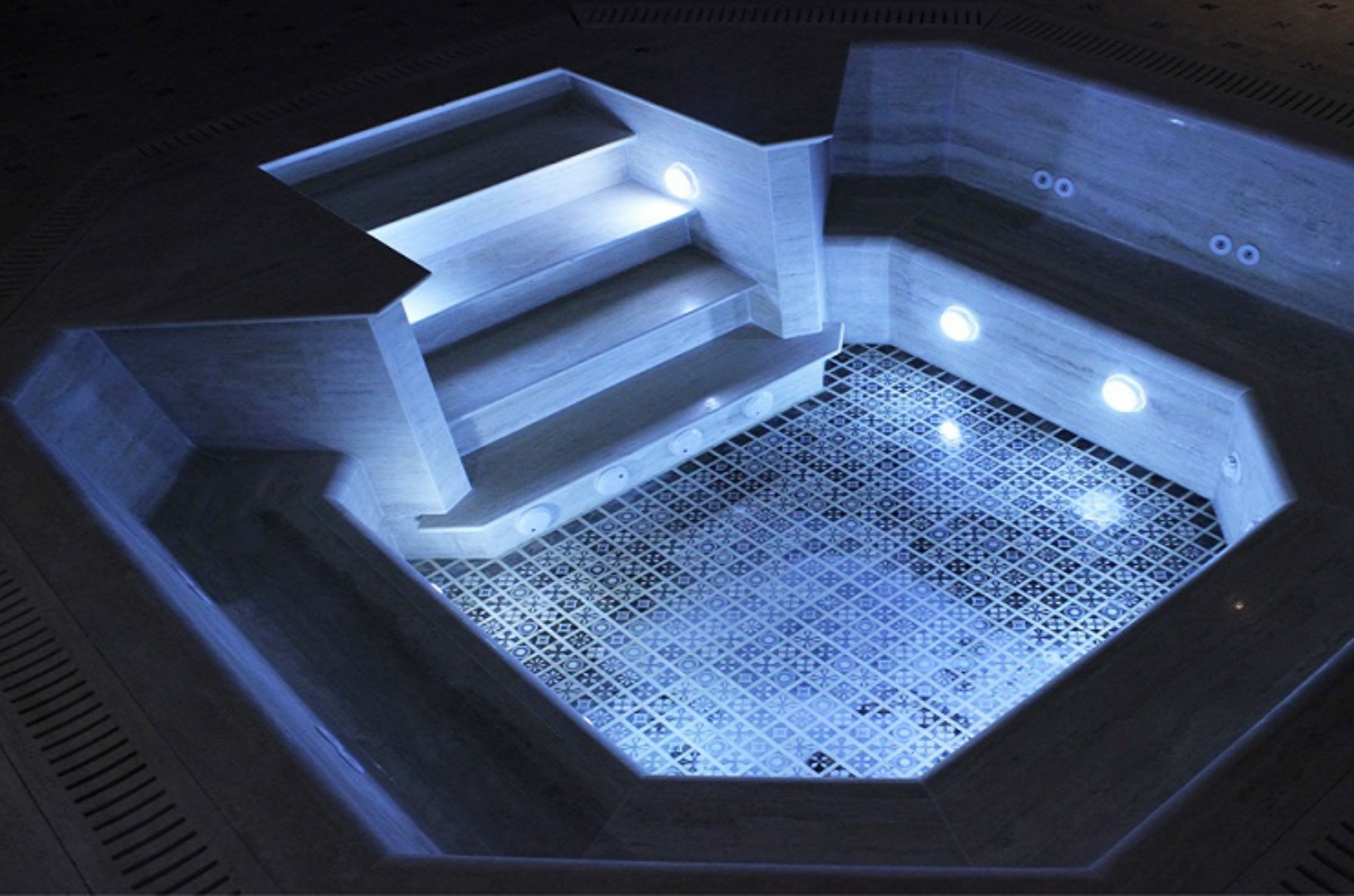
THE PERFECT VANISHING EDGE

A pool that blends into the landscape.

The location of this diving pool benefited from lush fields dropping away from the edge of the property boundary. The pool sits away from the main house and there are tennis courts in between that the lady of the house did not want to look at.

So we planted a hedge next to the tennis courts and installed a vanishing edge pool so that she can have an uninterrupted view of the landscape. A natural slate finish was chosen to complement the substantial pool house that contains a sauna, showers and a barbecue.





THE MIDDLE EASTERN LOOK

Putting everything in one room.

The architects for this 10,000 sqft luxury home in Mayfair (achieved by combining two town houses) instructed us to put a natural stone clad spa, marble 'Hammam' steam room, sauna, showers, two cold water features and sunken seating all within one room.

The brilliance in design is to maintain different temperatures in different parts of the same room, and we used air curtains to separate the dry and wet areas.





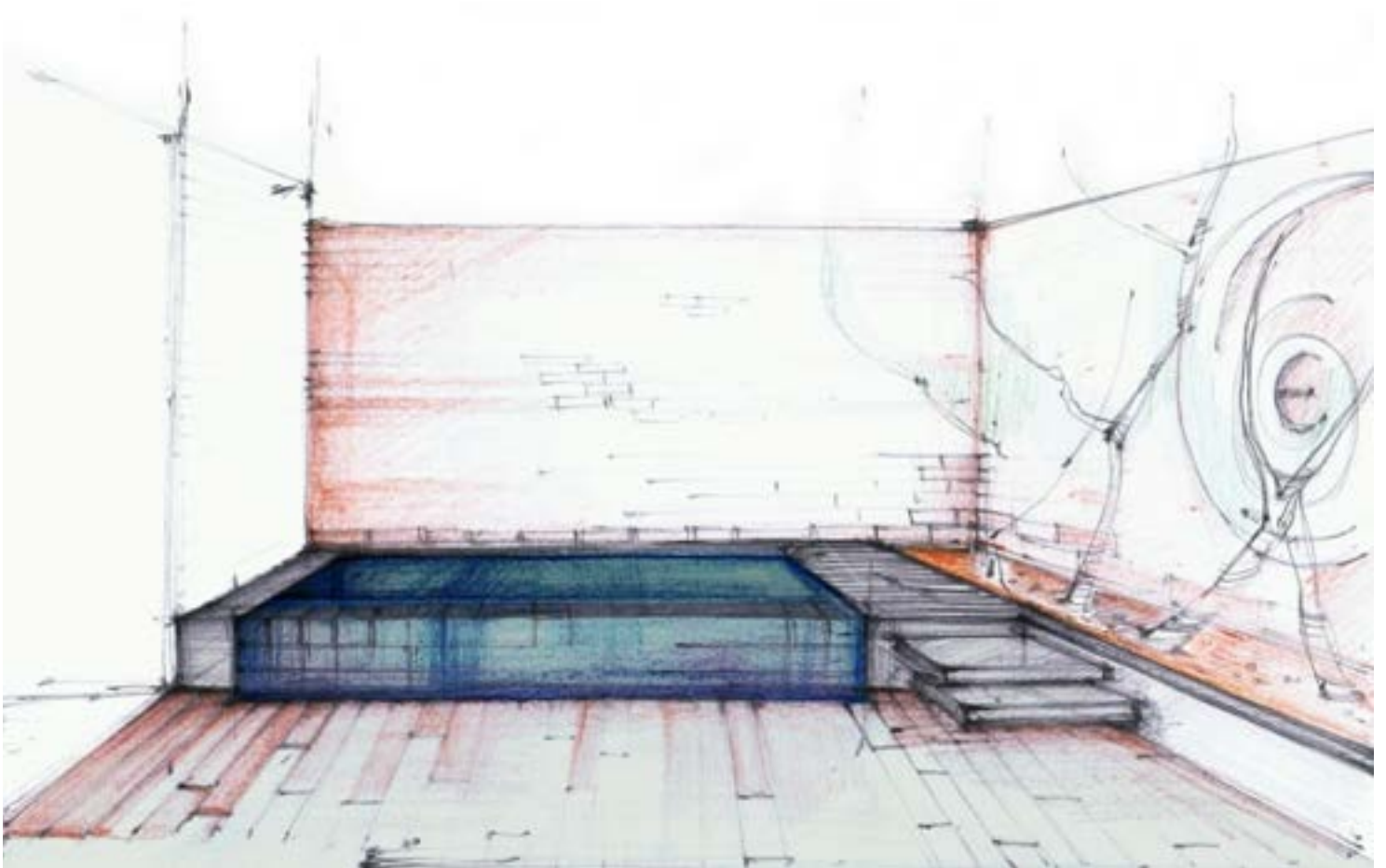
LUXURY HOTEL POOL & SPA

Pool that makes people spend money.

This luxury spa hotel in Dorset had an outdoor pool but they ALSO wanted to add another indoor one for year round use. The brief was to make the hotel profitable during the lean months of winter.

We designed and installed the 15m X 5m pool in a basement with a spa and bespoke lighting so that, even without any windows, the finished article looks fantastic. The colours and textures were chosen by the interior designers for a rich look & feel.





The Swimming Pool Company has an experienced team of qualified pool designers, builders, tilers & pool engineers. From initial design to build and follow-up maintenance, our team combines skilled workmanship with quality materials. Whether it is a brand new pool project or refurbishment of an existing pool, our service is second to none.

We have worked with some of London's finest architects and landscape designers. These experts use our advice right from the beginning so that the completed project is in harmony with the overall environment.

We design + build pools all over London and the South East, and you can reach our designer Hemant Atrish on the number below.

Whatsapp : +44 (0) 7950 972 561
Email : hemantatrish@gmail.com